

**ADDENDUM 4**

**ADDENDUM DATE:** July 16<sup>th</sup>, 2019

**PROJECT:** Asheboro City Schools – Kitchen Renovations  
Asheboro, NC 27203

**OWNER:** Asheboro City Schools  
1126 South Park St  
Asheboro, NC 27203

**ARCHITECT:** Smith Sinnett Architecture, P.A.  
4600 Lake Boone Trail, Suite 205  
Raleigh, North Carolina 27607

**BIDS DUE:** **Tuesday, July 23<sup>rd</sup>, 2019 at 2:00 p.m.**  
Asheboro City Schools  
Maintenance Office – Maintenance Bay  
1226 South Park Street  
Asheboro, NC 27203



**Please note, Project Documents and Addenda are available at [www.smithsinnett.com](http://www.smithsinnett.com) under the 'Documents' icon on the navigation bar.**

This Addendum shall be included in the contract for the above referenced project. All General, Supplementary and Special Conditions, etc., as originally specified or as modified below shall apply to these items.

**General**

Item 1 Bid Opening location has been changed. Sealed proposals for the **Second Bidding** will now be received until 2:00pm on Tuesday, July 23, 2019, at **Asheboro City Schools Maintenance Office – Maintenance Bay at 1226 South Park Street, Asheboro, NC 27203**

**Architectural Drawings**

Item 2 **REPLACE:** Sheet A1-10LP. Revised sheet provides clarification on door and frame type for door #101 at Lindley Park Elementary School. Door #101 is to be Hollow Metal type 'HG' and the frame is to be Hollow Metal.

**Specifications**

Item 3      **ADD:** Specification Section 096723 – Resinous Flooring – add Tnemec as approved equal, subject to compliance with the specifications.

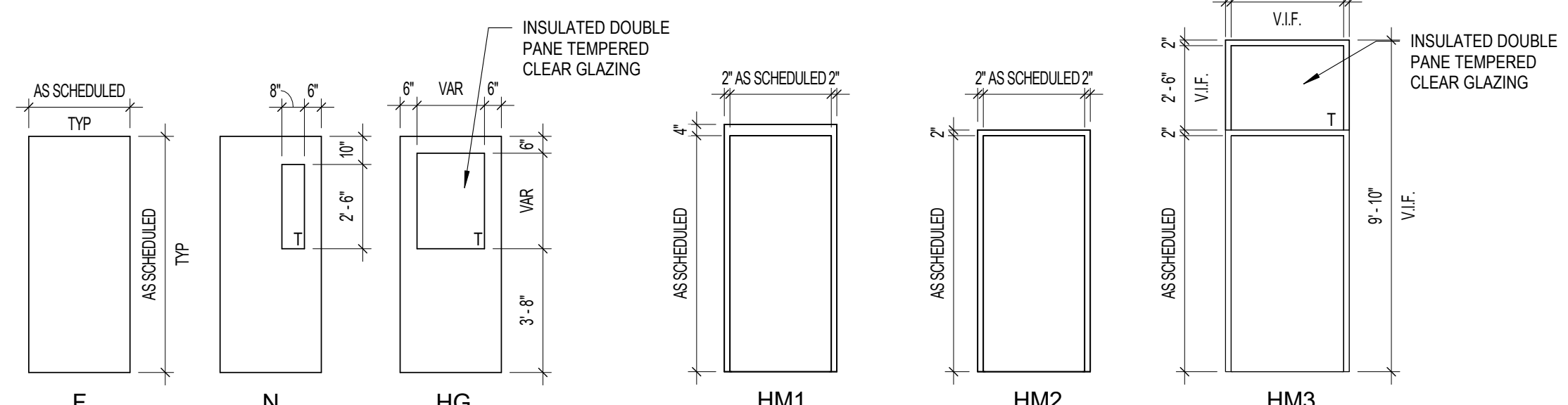
**End of Addendum 4**

**Attached:**

Attachment:      Sheet A1-10LP – Floor Plan

**DOOR SCHEDULE**

DOOR				FRAME				DETAILS			HARDWARE SET	FIRE RATING	REMARKS	
MARK	WIDTH	HEIGHT	THK	MAT	TYPE	LVS	MAT	TYPE	HEAD	JAMB				THRESH
101	3'-4"	7'-2"	134"	HM	HG	1	HM	HM3	6/A1-10LP	4/A1-10LP	2/A1-10LP	1		
104	3'-0"	7'-0"	134"	SCWD	F	1	HM	HM2	3/A1-10LP	5/A1-10LP	2/A7-01LP	4		
106	3'-0"	7'-0"	134"	FRP	F	1	HM	HM2	3/A1-10LP	5/A1-10LP	2/A7-01LP	2		
107	3'-0"	7'-2"	134"	SCWD	N	1	HM	HM2	3/A1-10LP	5/A1-10LP	2/A7-01LP	3		
E100A	3'-0"	7'-0"	134"	-	-	1	-	-	-	-	-	-		EXISTING TO REMAIN
E100B	3'-0"	7'-0"	134"	-	-	1	-	-	-	-	-	-		EXISTING TO REMAIN
E106	4'-0"	7'-2"	134"	-	-	1	-	-	-	-	-	-		EXISTING TO REMAIN
E201	7'-3"	7'-0"	134"	-	-	2	-	-	-	-	-	-		EXISTING TO REMAIN



**DOOR LEGEND**  
1/4" = 1'-0"

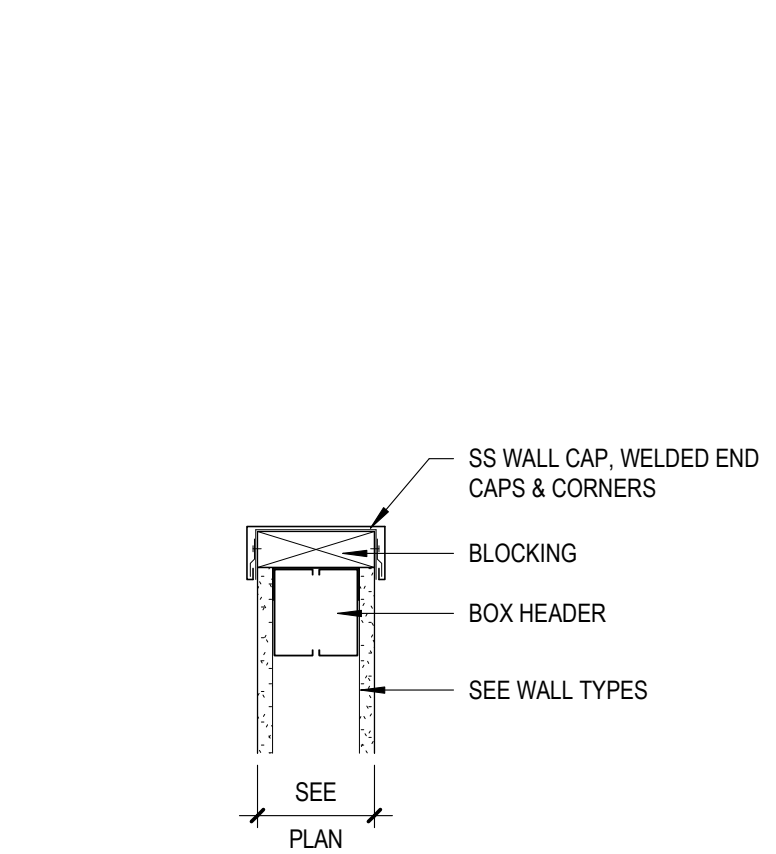
**FRAME LEGEND**  
1/4" = 1'-0"

**WALL TYPE SYMBOL LEGEND**

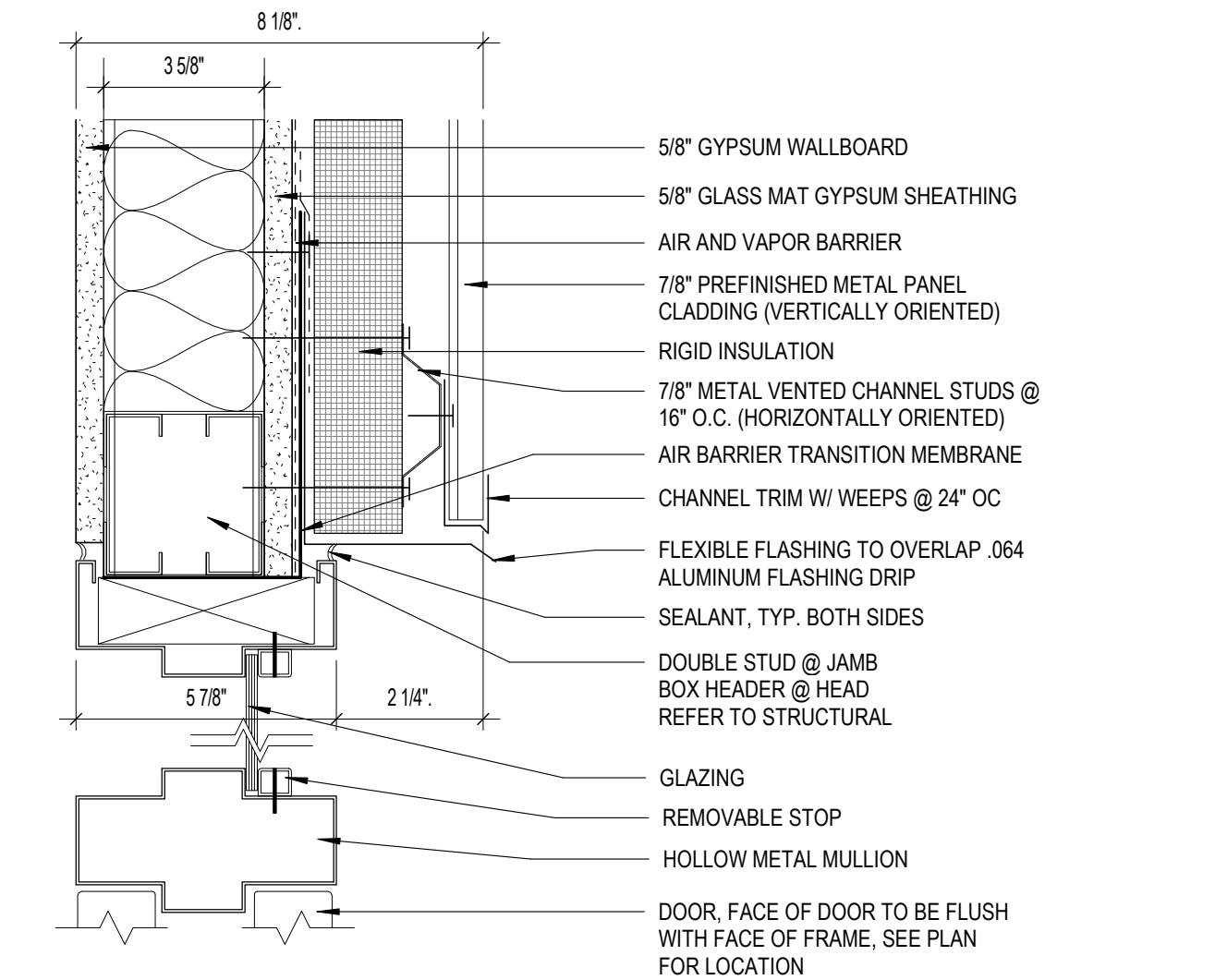
MARKER	SYMBOL	DESCRIPTION
A1	[Symbol]	3 5/8" METAL STUD WITH ONE LAYER OF 5/8" GYP BOARD EACH SIDE UP TO BOTTOM OF DECK.
A2	[Symbol]	3 5/8" METAL STUD WITH ONE LAYER OF 5/8" PLYWOOD SHEATHING AND FRP EACH SIDE. SEE ELEVATION FOR HEIGHT. SEE DETAIL (7/A1-10LP) FOR S.S. CAP.
A3	[Symbol]	3 5/8" METAL STUD WITH 5/8" GYP BOARD ON ONE SIDE UP TO BOTTOM OF DECK (NON-RATED)
A4	[Symbol]	6" METAL STUD WITH 5/8" GYP BOARD ON ONE SIDE - SEE ELEVATION FOR HEIGHT. (NON-RATED)
A5	[Symbol]	5/8" RATED GYP BOARD ON ONE SIDE - SEE ELEVATION FOR HEIGHT
EX1	[Symbol]	6" CMU INFILL WALL
W	[Symbol]	4" INSULATED METAL PANEL PROVIDED BY MANUFACTURER. SEE SPECIFICATIONS FOR WALK-IN COOLER/FREEZER.

**NOTES:**

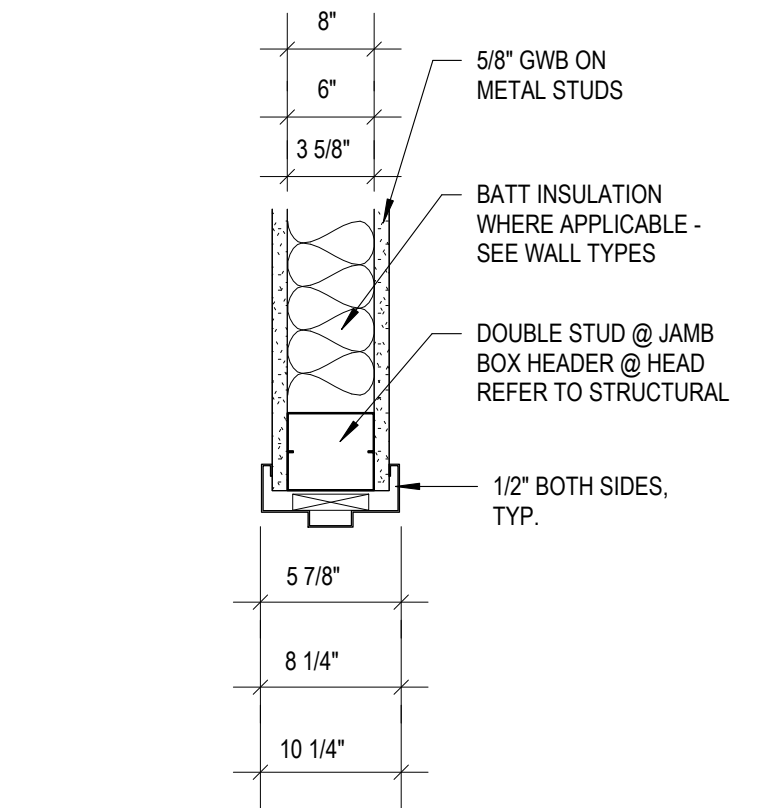
- ALL INTERIOR WALL TYPES TO BE 'A' UNLESS OTHERWISE NOTED.
- ALL EXTERIOR WALL TYPES TO BE 'E' UNLESS OTHERWISE NOTED.
- WALL DIMENSIONS ARE TO FACE OF METAL STUD, FACE OF CONCRETE MASONRY UNIT (CMU), OR CENTERLINE OF COLUMN.
- ALL RATED WALL CONSTRUCTION TO COMPLY WITH UL REQUIREMENTS.
- ALL CMU WALLS GOING TO BOTTOM OF DECK ARE TO PROVIDE A 1" GAP FOR DEFLECTION, FILL GAP WITH MINERAL WOOL INSULATION ALONG THE ENTIRE LENGTH OF WALL. AT FIRE RATED WALLS, ENSURE SPRAY APPLIED FIRE SEALANT BOTH SIDES.
- ALL METAL STUD WALLS TERMINATING AT BOTTOM OF DECK ARE TO PROVIDE A DEFLECTION TRACK SECURED TO THE UNDERSIDE OF THE DECKING. NEST TOP TRACK BUT DO NOT ATTACH TO DEFLECTION TRACK. FILL FLUTE IN METAL DECK WHERE REQUIRED.
- ALL WALLS EXTEND TO DECK AND ARE BRACED TO DECK AT HEAD ON ALTERNATE STUDS OR 32" OC FOR CMU WALLS. UNLESS OTHERWISE NOTED.
- CONTROL JOINTS SHALL BE AS SHOWN ON PLANS AND ELEVATIONS OR SPACED AT A MINIMUM OF 20'-0" OC AND A MAXIMUM OF 32'-0" OC WITH ONE CONTROL JOINT LOCATED WITHIN 3'-4" OF ANY CORNER. FOR INTERIOR GYPSUM WALL CONTROL JOINTS SEE DETAIL 9. SEE FINISH SCHEDULE FOR WALL, FLOOR, BASE, AND CEILING TYPES AND FINISHES.
- REFER TO STRUCTURAL DRAWINGS FOR LOCATION OF REINFORCING, BOND BEAMS, BRACING, ETC.
- ALL COLUMN CHASES TO HAVE GYP BOARD ON ROOM SIDE OF WALL, TYPICAL UNLESS OTHERWISE NOTED.
- ALL EXTERIOR SIDEWALKS SHALL SLOPE AWAY FROM THE BUILDING AT 1/4" PER FOOT, MINIMUM.
- ALL EXTERIOR WINDOWS TO HAVE ROLLER SHADE BLINDS UNLESS OTHERWISE NOTED. REFER TO SPECIFICATIONS.
- FURNITURE AND EQUIPMENT SHOWN DASHED ON PLANS IS NOT IN CONTRACT (NIC). GC TO PROVIDE WOOD BLOCKING FOR ALL WALL/CEILING MOUNTED ACCESSORIES.
- FIELD VERIFY FINAL ROOM DIMENSIONS PRIOR TO CASEWORK FABRICATION.
- WARP SLAB DOWN 1" IN A 2'-0"x2'-0" SQUARE AROUND ALL FLOOR DRAINS.
- ALL CERAMIC TILE TO HAVE CONTROL JOINTS THAT ALIGN WITH CONTROL JOINTS IN CONCRETE SLAB.
- THERE SHALL BE NO PENETRATIONS IN THROUGH WALL FLASHING.
- DOOR JAMB FROM INTERSECTING WALLS: CMU - 8" UNLESS OTHERWISE NOTED STUD - 4" UNLESS OTHERWISE NOTED



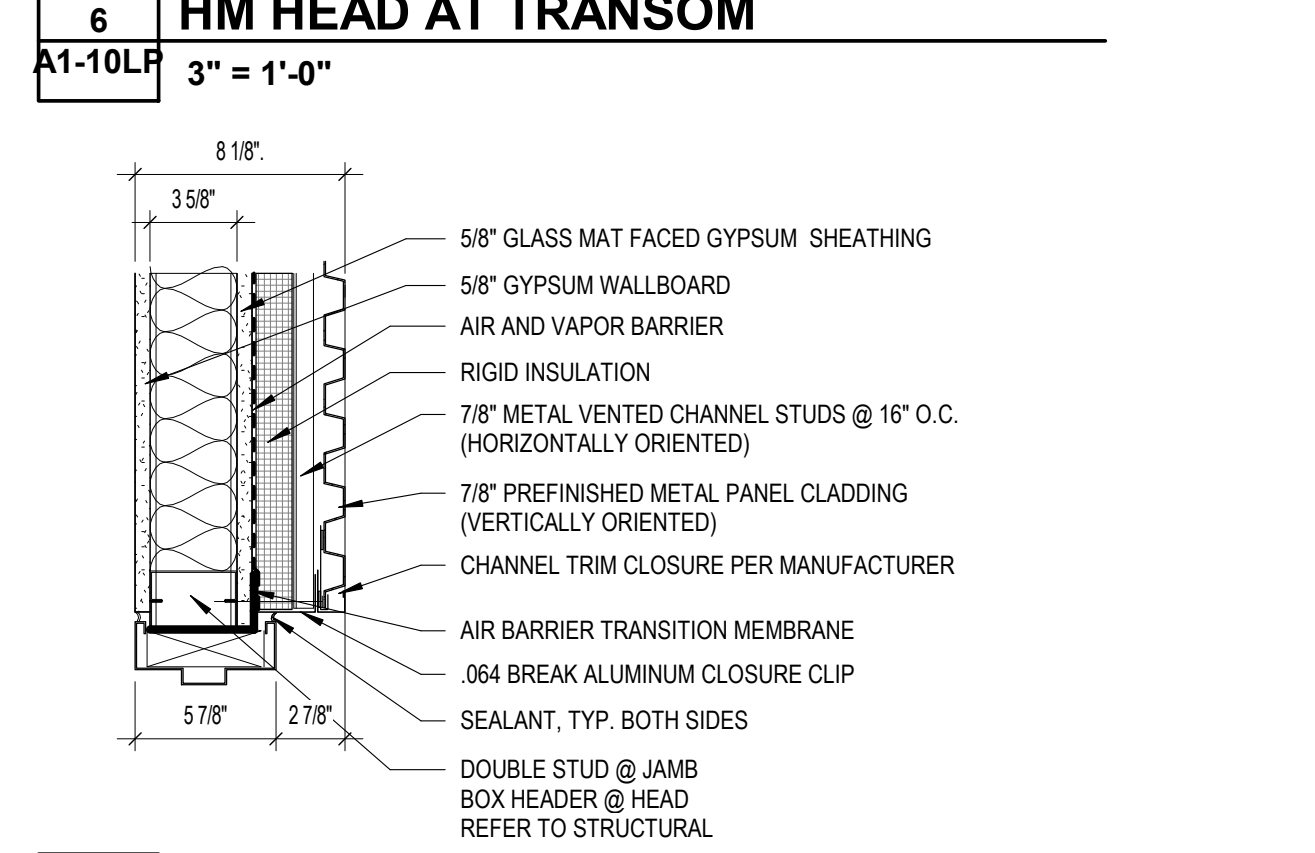
**7 SS WALL CAP**  
A1-10LP 1 1/2" = 1'-0"



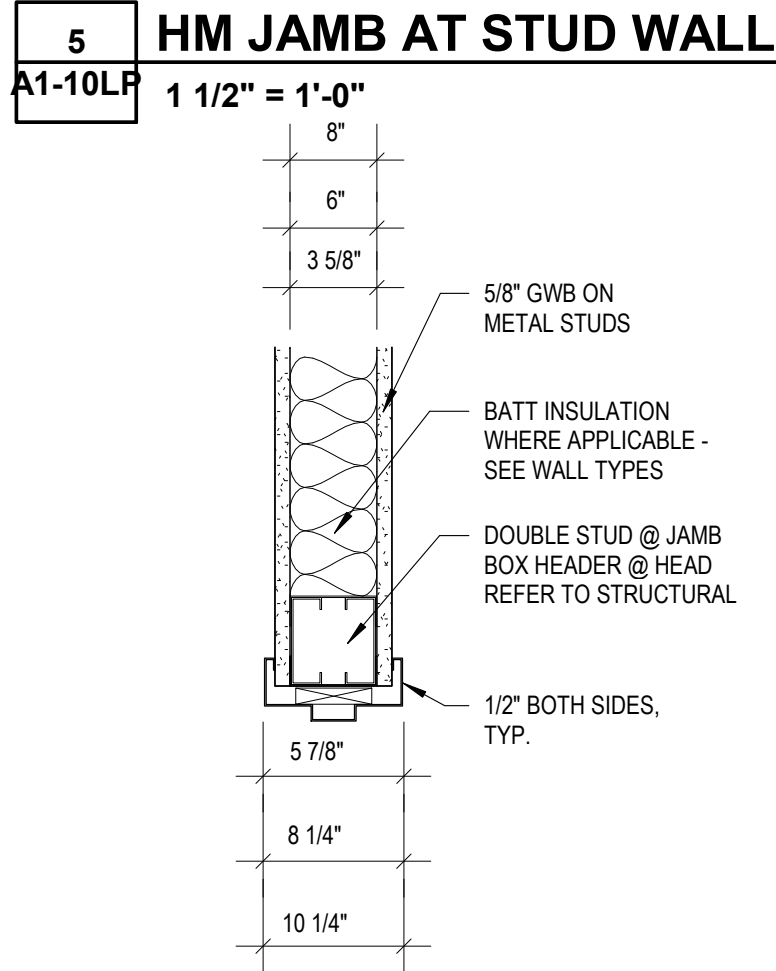
**6 HM HEAD AT TRANSOM**  
A1-10LP 3" = 1'-0"



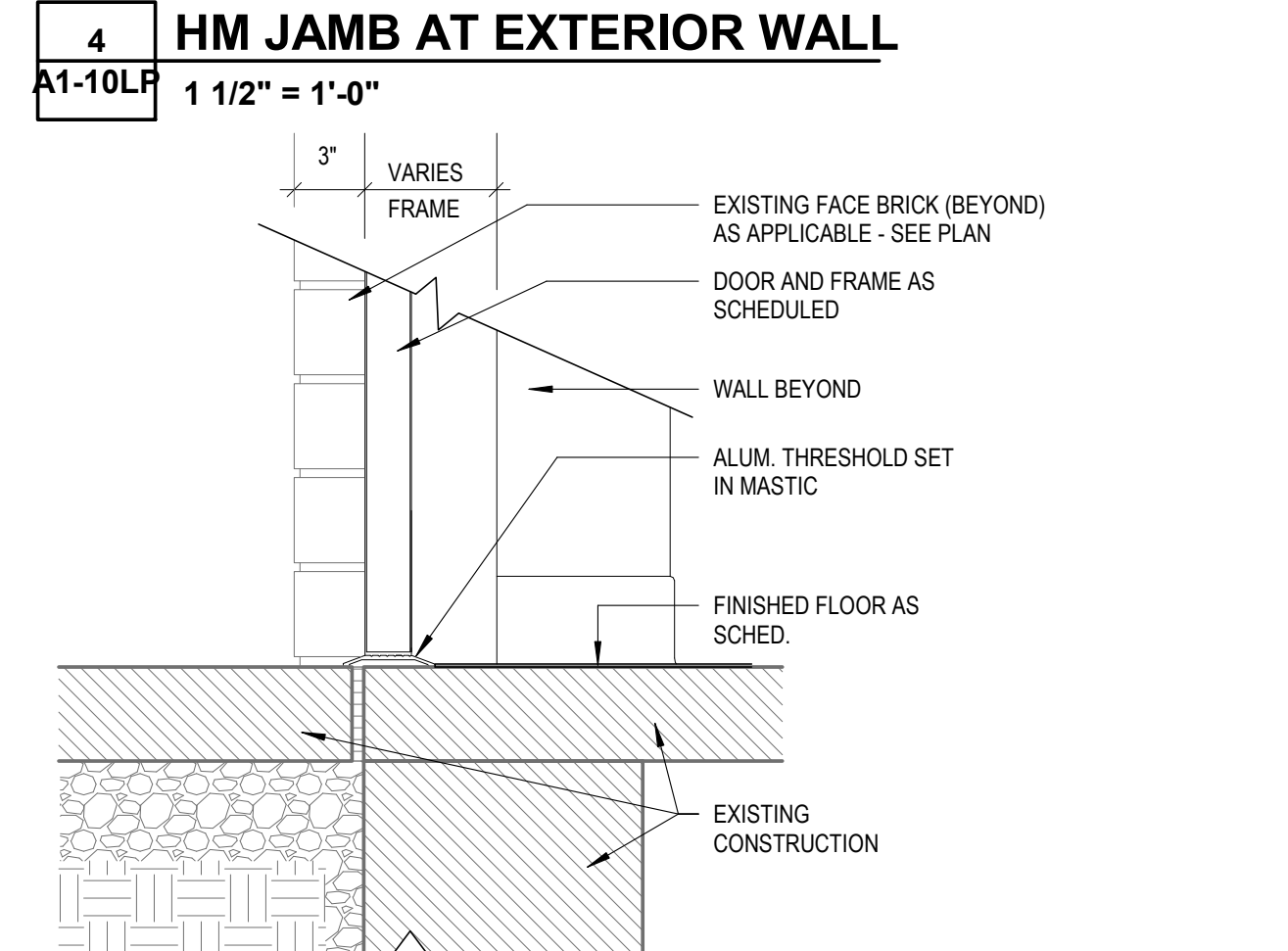
**5 HM JAMB AT STUD WALL**  
A1-10LP 1 1/2" = 1'-0"



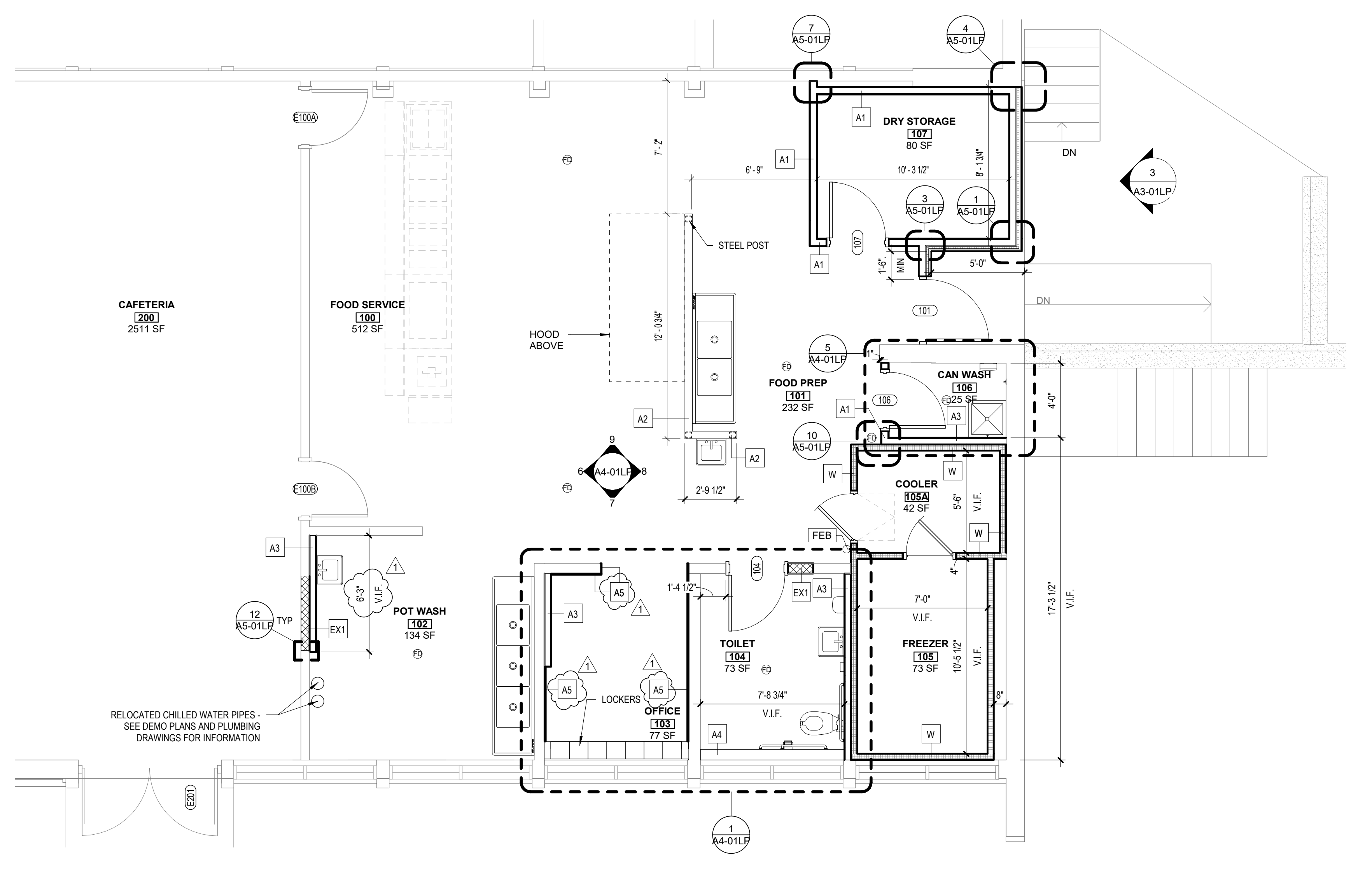
**4 HM JAMB AT EXTERIOR WALL**  
A1-10LP 1 1/2" = 1'-0"



**3 HM HEAD AT STUD WALL**  
A1-10LP 1 1/2" = 1'-0"



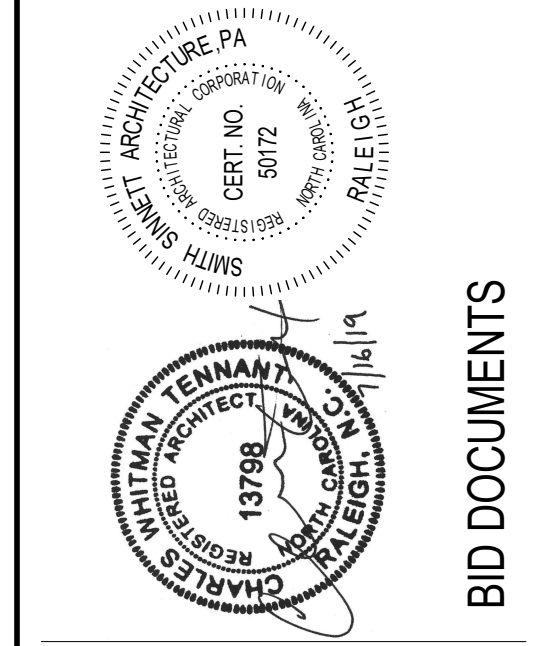
**2 TYPICAL EXTERIOR DOOR THRESHOLD**  
A1-10LP 1 1/2" = 1'-0"



**1 FIRST FLOOR PLAN**  
A1-10LP 1/4" = 1'-0"



T 919 781 8582  
F 919 781 3979  
4600 Lane Boone Trail  
Boone, NC 27607  
info@smithsinnett.com



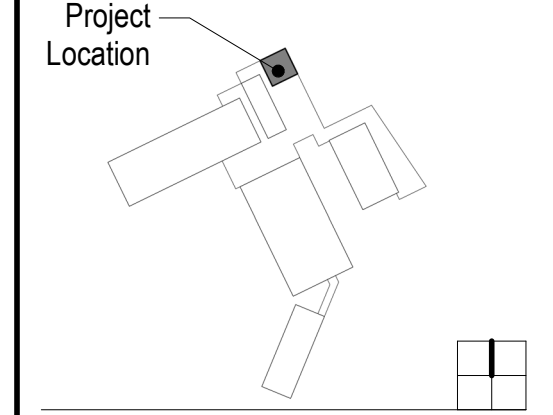
**VOLUME 2**

This drawing and the design shown is the property of Smith Sinnett Architecture, P.A. The reproduction or use of this drawing without the written consent of the architect is prohibited. All copies of this drawing must be returned to the Architect at the completion of the contract.  
Smith Sinnett Architecture, P.A., 2019

THIS DRAWING IS FORMATTED TO BE PRINTED ON A 24" X 36" SHEET

**Asheboro City Schools - Kitchen Renovations**  
Vol. 1 - McCrary Elementary  
400 Ross Street, Asheboro, NC 27203  
Vol. 2 - Lindley Park Elementary  
312 Cliff Road, Asheboro, NC 27203

ID	DATE	DESCRIPTION
3	07/16/2019	ADDENDUM 4
1	07/02/2019	ADDENDUM 1



Project Location  
DRAWN BY: CWT  
CHECKED BY: JG

**FLOOR PLAN**

2018028 ## of ## 14 JUN 2019

**A1-10LP**