

**ADDENDUM 2**

**ADDENDUM DATE:** September 10, 2024

**PROJECT:** Rocky Mount Early Site Package  
400 Fountain School Rd  
Rocky Mount, NC 27801

**OWNER:** North Carolina National Guard  
1613 Gold Star Drive  
Raleigh, NC 27607

**ARCHITECT:** Smith Sinnett Architecture, P.A.  
4600 Lake Boone Trail, Suite 205  
Raleigh, North Carolina 27607

**BIDS DUE:** **3:00pm September 19, 2024**  
Joint Force Headquarters  
JFHQ Cafeteria  
1613 Gold Star Drive  
Raleigh, NC 27607

**Please note – Project Documents, Addenda, and Contractors list are available at [www.smithsinnett.com](http://www.smithsinnett.com) under the ‘Documents’ icon on the navigation bar.**

This Addendum shall be included in the contract for the above referenced project. All General, Supplementary and Special Conditions, etc., as originally specified or as modified below shall apply to these items.

This Addendum forms a part of the Contract Documents and modifies the original Bidding Documents as noted. Bidders shall acknowledge receipt of the Addendum in the space provided on the Bid Form. Failure to do so may subject the Bidder to Disqualification.

Where any article, division or subparagraph of the original contract documents or other addenda is supplemented herein, the provisions of the original documents shall remain in effect. All the supplemental provisions shall be considered as added thereto. Where any such article, division or subparagraphs are amended, voided or superseded thereby, the provisions of such article, division or subparagraph not so specifically amended, voided or superseded shall remain in effect.

The attention of the Contractor is called to the following clarifications, additions to, and changes in the plans and specifications on the above job. It will be the responsibility of each Contractor to call such clarifications, additions to and changes in the plans and specifications to the attention of subcontractors concerned. The Architect in no way assumes any responsibility for notifying any subcontractor, material dealers or others not having received the original contract documents.

## SPECIFICATIONS

Timmons Group  
5410 Trinity Road, Suite 102  
Raleigh, NC 27607  
Attn: Frank Slinsky  
(919) 866-4505  
[Frank.Slinsky@timmons.com](mailto:Frank.Slinsky@timmons.com)

### ITEM 1.

The as-built requirements are removed entirely from the base bid. The owner shall hire a separate contractor to complete the as-built survey. In specification section 33 40 00 Section 1.4, omit Part B in its entirety:

- B. As-Built Survey / Record drawings at Project closeout of installed drainage system piping and basins and all stormwater management devices (storm sewers and detention ponds). As-built survey shall be signed and seal by a NC Professional Land Surveyor and shall include the following:
1. All basin locations with no less than two primary reference dimensions from permanent above grade features.
  2. Detailed as-built dimensions and elevations of stormwater management device: Outlet structures, rims, weirs, orifices, and outlet pipes with inverts.
  3. As-built storm sewer pipes and inlets: Pipe materials and sizes, plus slopes, inverts and distances between structures.
  4. As-built dimensions for installed riprap dissipater pads.
  5. Topography of embankments and interiors of drained stormwater management ponds. Topography shall include all survey point elevations.

## CHANGES TO THE DRAWINGS

### ITEM 2.

In the Grading & Drainage Notes on Sheet C4.0, omit line item 15:

- "PRIOR TO FINAL PROJECT ACCEPTANCE, PROVIDE AN AS-BUILT SURVEY OF ALL UTILITY SYSTEMS AND STORM SEWERS."

The as-built requirements are removed entirely from the base bid. The owner shall hire a separate contractor to complete the as-built survey.

### ITEM 3.

In Detail 1 on Sheet C5.3, omit the entirety of the AS-BUILT SURVEY REQUIREMENTS box note:

"NOTE: CONTRACTOR SHALL PROVIDE AS-BUILT TOPOGRAPHIC SURVEY PERFORMED BY A PROFESSIONAL LAND SURVEYOR CERTIFYING WET DETENTION POND AREA DIMENSIONS AND ELEVATIONS OF THE FOLLOWING:

1. TOPOGRAPHIC SURVEY OF THE WET POND AND EMBANKMENT
2. OUTLET STRUCTURE TOPS AND INVERTS
3. OUTLET STRUCTURE DIMENSIONS
4. ORIFICE DIAMETERS
5. BARREL PIPE SIZES AND INVERTS
6. EMERGENCY SPILLWAY ELEVATION AND DIMENSIONS"

The as-built requirements are removed entirely from the base bid. The owner shall hire a separate contractor to complete the as-built survey.

ITEM 4.

In Detail 1 on Sheet C5.1, omit the note:

“PERMANENT CAST IN PLACE OUTLET STRUCTURE (REFER TO STORMWATER CONTROL MEASURE DETAIL).”

A precast outlet control measure is allowed.

ITEM 5.

In Detail 1 on Sheet C5.3, omit the note:

“CAST IN PLACE RISER IS REQUIRED WITHOUT EXCEPTION.”

A precast outlet control measure is allowed.

**CLARIFICATIONS**

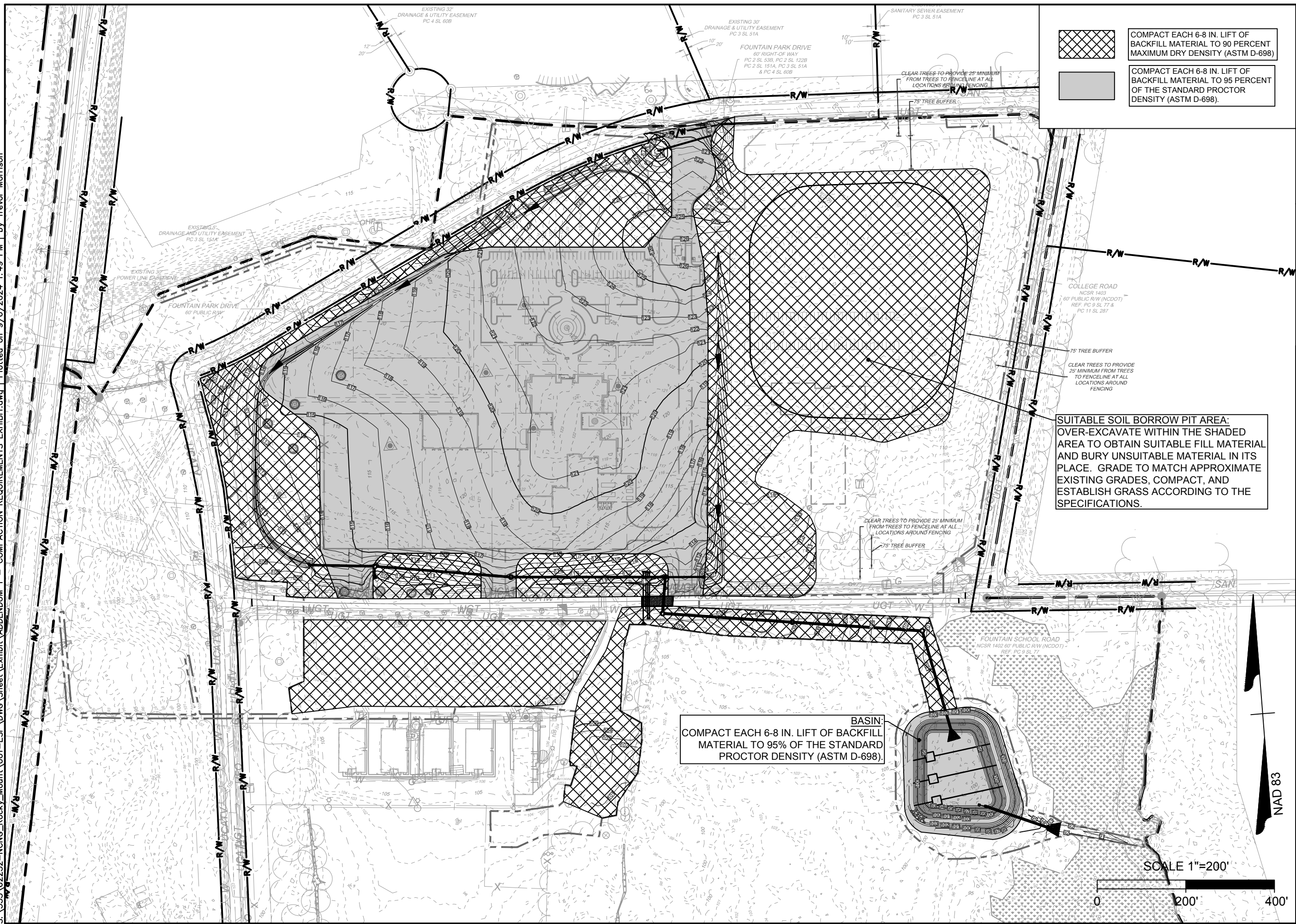
ITEM 6.



The required compactions for the various site areas are shown on the attached Compaction Requirements Exhibit sketch AD2-EX1.

**End of Addendum 2**

**Attached:**

Compaction Requirements Exhibit (1 Page)



 COMPACT EACH 6-8 IN. LIFT OF BACKFILL MATERIAL TO 90 PERCENT MAXIMUM DRY DENSITY (ASTM D-698)  
 COMPACT EACH 6-8 IN. LIFT OF BACKFILL MATERIAL TO 95 PERCENT OF THE STANDARD PROCTOR DENSITY (ASTM D-698).

THIS DRAWING PREPARED AT THE  
**RALEIGH OFFICE**  
 5410 Trinity Road, Suite 112 | Raleigh, NC 27607  
 TEL 919.866.4951 FAX 919.833.8124 www.timmons.com

YOUR VISION ACHIEVED THROUGH OURS.

DATE  
 09-06-2024  
 DRAWN BY  
 TM  
 DESIGNED BY  
 TM  
 CHECKED BY  
 FS  
 SCALE  
 1"=200'



TIMMONS GROUP

NCNG ROCKY MOUNT EARLY SITE PACKAGE  
 300 FOUNTAIN SCHOOL ROAD, ROCKY MOUNT, NC 27801

COMPACTION REQUIREMENTS EXHIBIT

SCO NO.	REVISION DESCRIPTION
22-25885-028	
SHEET NO.	
AD2-EX1	

These plans and associated documents are the exclusive property of TIMMONS GROUP and may not be reproduced in whole or in part and shall not be used for any purpose whatsoever, including, but not limited to construction, bidding, and/or construction staging without the express written consent of TIMMONS GROUP.